



South Kingstown Schools Redistricting Scenario Presentation

April 1, 2022

Presented by



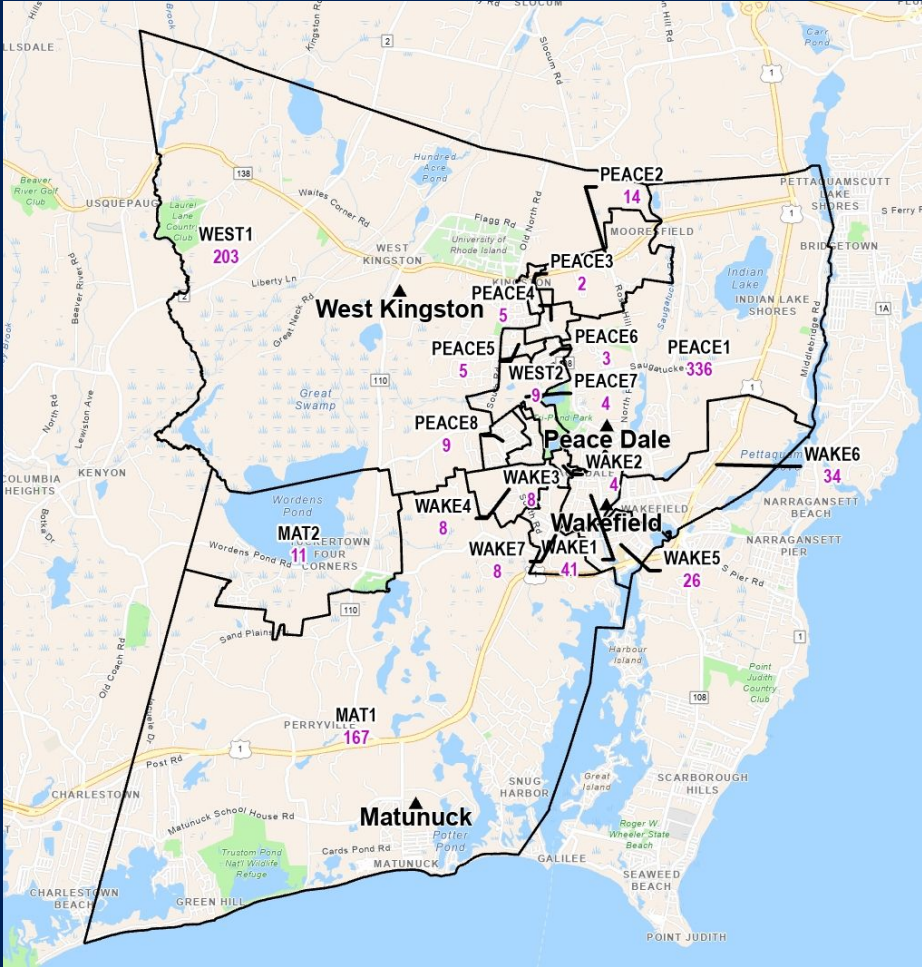
What We're Covering Today

- Recap of Kickoff Meeting
- Project Goals and Objectives
- Component Review
- Scenario Review
- Next Steps
- Questions/Discussion

Project Goals & Objectives

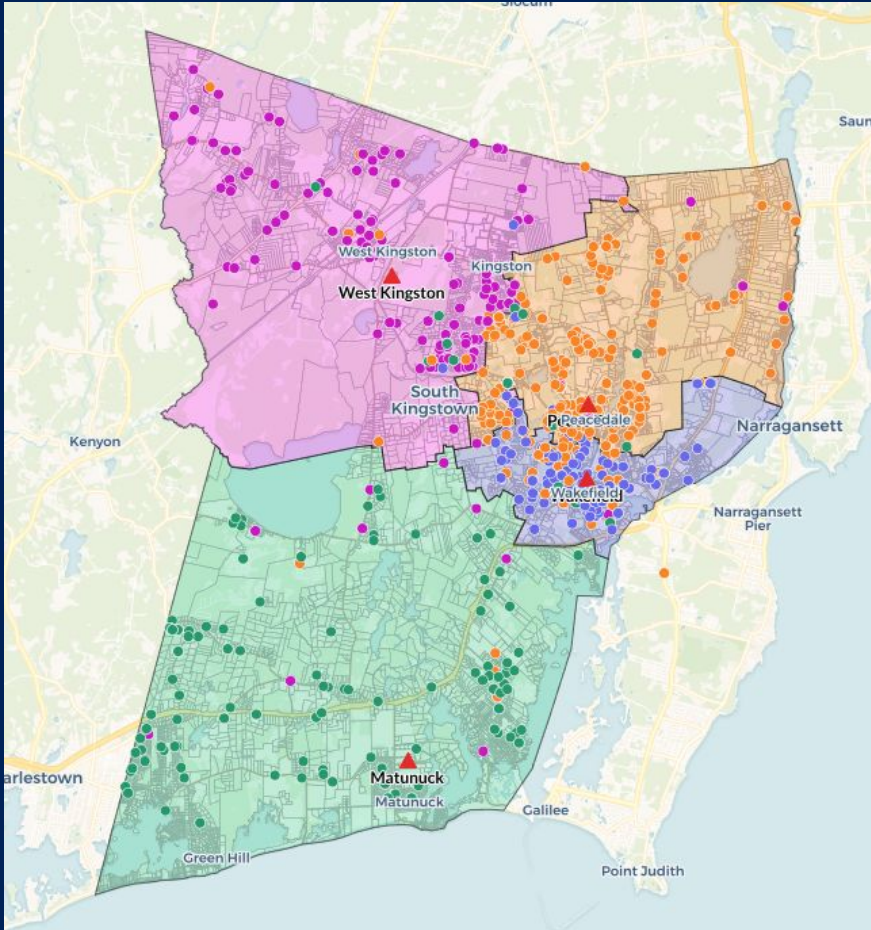
The district has seen declining enrollment and is looking to consolidate from 4 elementary schools to 3 elementary schools (closing Wakefield) with a view at using resources optimally. The project goal is to evaluate and adjust district boundaries to create district-wide enrollment balance (all students and DLI students) with the new configuration.

Components

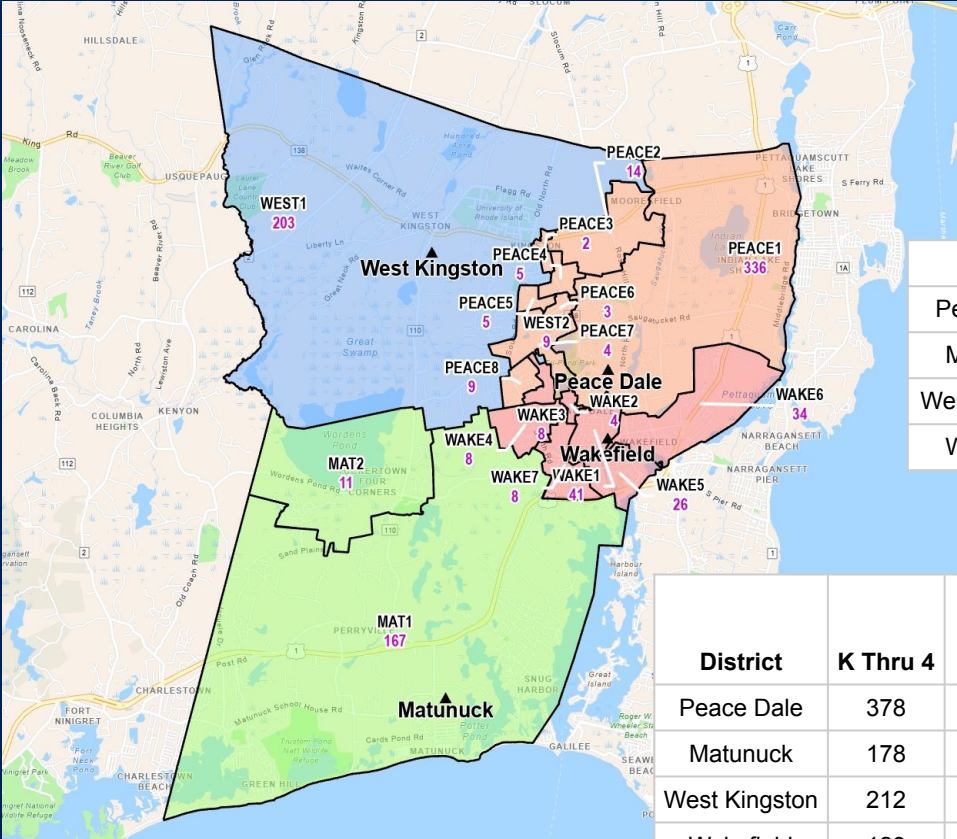


Elementary School Students and Districts

District	K-4
Matunuck	178
Peacedale	378
Wakefield	129
West Kingston	212



Elementary Current Configuration

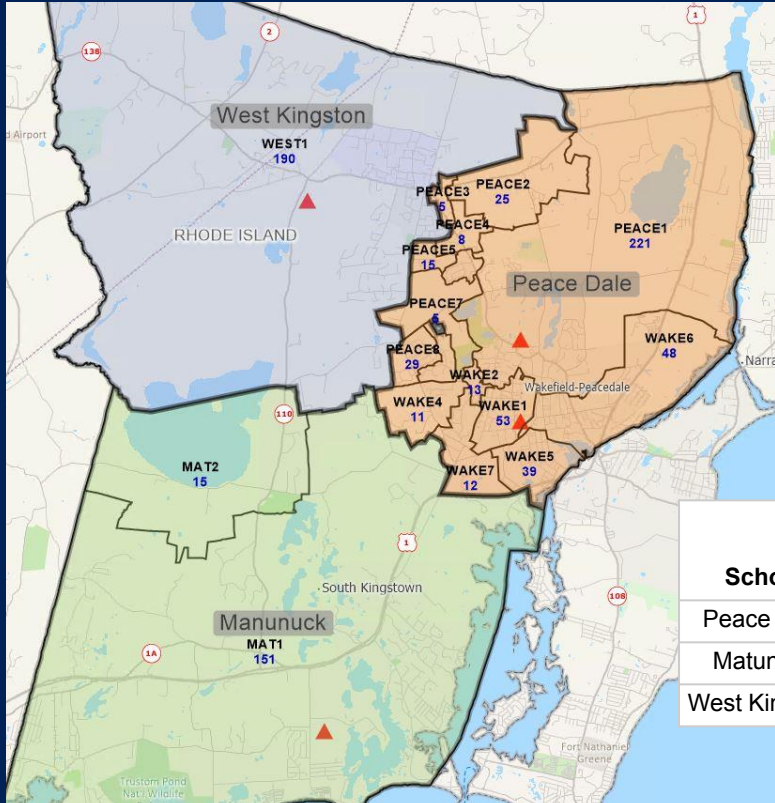


School	Capacity	Grade K	Grade 1	Grade 2	Grade 3	Grade 4	K Thru 4
Peace Dale	560	75	71	80	80	72	378
Matunuck	400	27	30	37	41	43	178
West Kingston	400	38	39	47	43	45	212
Wakefield	326	23	19	19	40	28	129

District	K Thru 4	Capacity	% Capacity	% Special Ed	% Free/Reduced Lunch	% English Learners	DLI	% DLI
Peace Dale	378	560	68%	19%	16%	2%	192	51%
Matunuck	178	400	45%	22%	7%	0%	0	0%
West Kingston	212	400	53%	15%	10%	5%	166	78%
Wakefield	129	326	40%	22%	6%	2%	0	0%

Scenario 1 - All of Wakefield to Peacedale

Assuming no exceptions - all students go to the geographic district they are located in

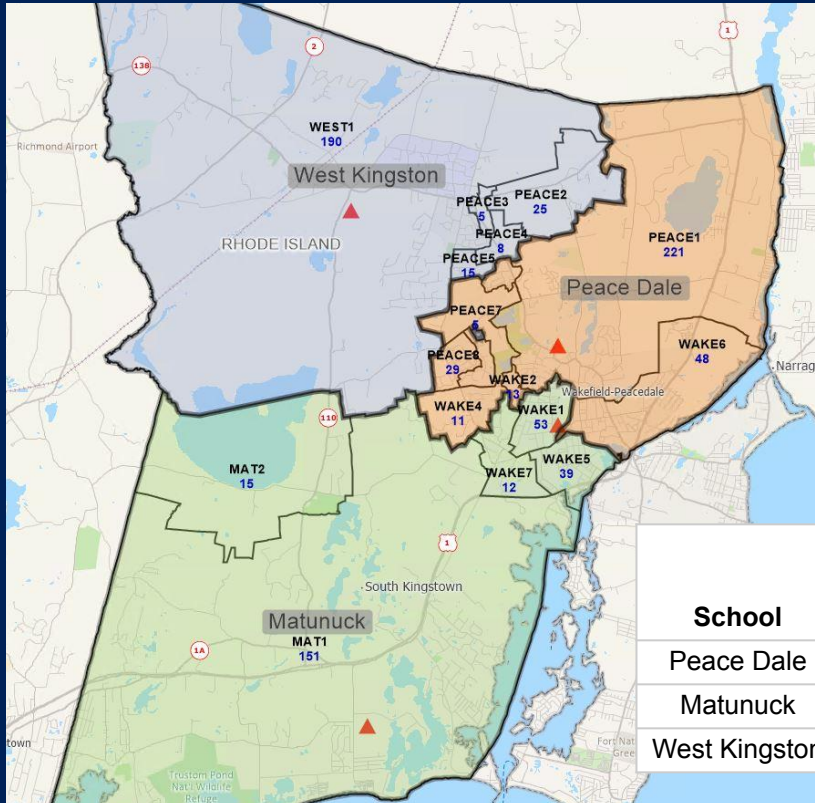


School	Grade K	Grade 1	Grade 2	Grade 3	Grade 4	K Thru 4
Peace Dale	97	91	98	125	100	511
Matunuck	25	28	39	36	38	166
West Kingston	41	40	46	43	50	220

School	K Thru 4	Capacity	% Capacity	% Special Ed	% Free/Reduced Lunch	DLI	% DLI
Peace Dale	511	560	91%	21%	13%	203	40%
Matunuck	166	400	42%	17%	5%	14	8%
West Kingston	220	400	55%	16%	12%	141	64%

Scenario 2 - Equal Distribution Across 3 Schools

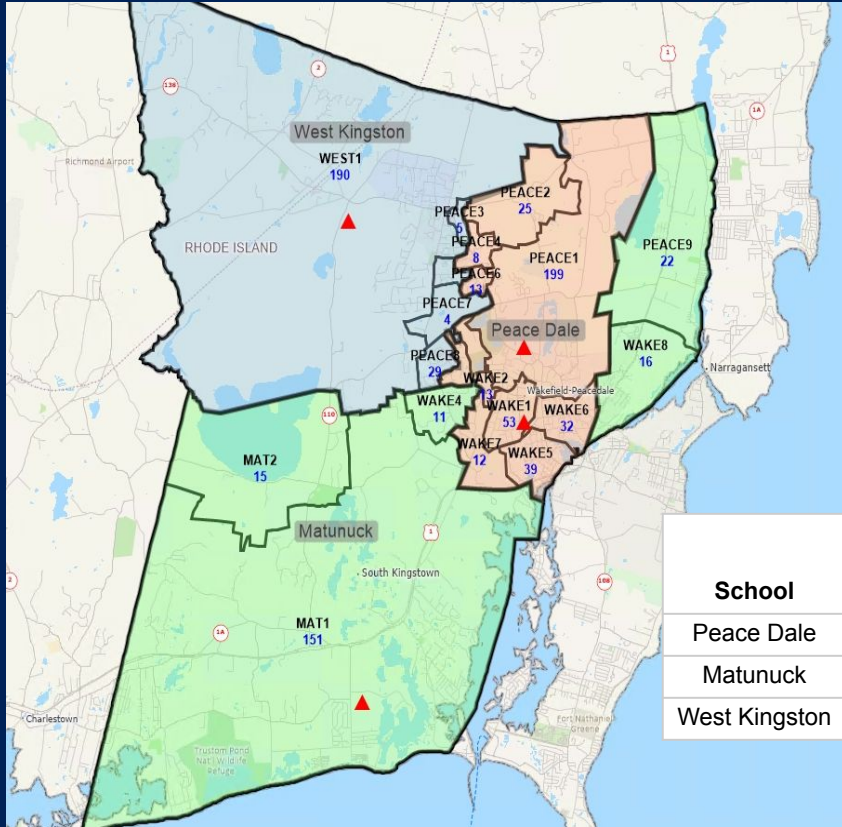
Assuming no exceptions - all students go to the geographic district they are located in



School	Grade K	Grade 1	Grade 2	Grade 3	Grade 4	K Thru 4
Peace Dale	72	62	65	89	66	354
Matunuck	45	44	59	64	58	270
West Kingston	46	53	59	51	64	273

School	K Thru 4	Capacity	% Capacity	% Special Ed	% Free/Reduced Lunch	% DLI	DLI
Peace Dale	354	560	63%	22%	16%	43%	151
Matunuck	270	400	68%	19%	6%	15%	41
West Kingston	273	400	68%	15%	10%	61%	166

Scenario 3 - Prioritizing Distance & Transportation



Assuming no exceptions - all students go to the geographic district they are located in

School	Grade K	Grade 1	Grade 2	Grade 3	Grade 4	K Thru 4
Peace Dale	78	72	78	102	79	409
Matunuck	36	33	49	49	48	215
West Kingston	49	54	56	53	61	273

School	K Thru 4	Capacity	% Capacity	% Special Ed	% Free/Reduced Lunch	DLI	% DLI
Peace Dale	409	560	73%	23%	15%	149	36%
Matunuck	215	400	54%	17%	5%	34	16%
West Kingston	273	400	68%	15%	10%	175	64%

Next Steps

- Update scenarios with feedback
- Sub-committee meeting on 4/7
- School committee meeting 4/26

Questions?

